

<sup>1</sup> Centre National des Sciences Halieutiques de Boussouira (CNSHB), Conakry, République de Guinée

<sup>2</sup> Centre d'Investigation des Pêches Appliquées (CIPA), Bissau, Guinea-Bissau.

<sup>3</sup> IRD (Institut de Recherche pour le Développement), MARBEC/ France

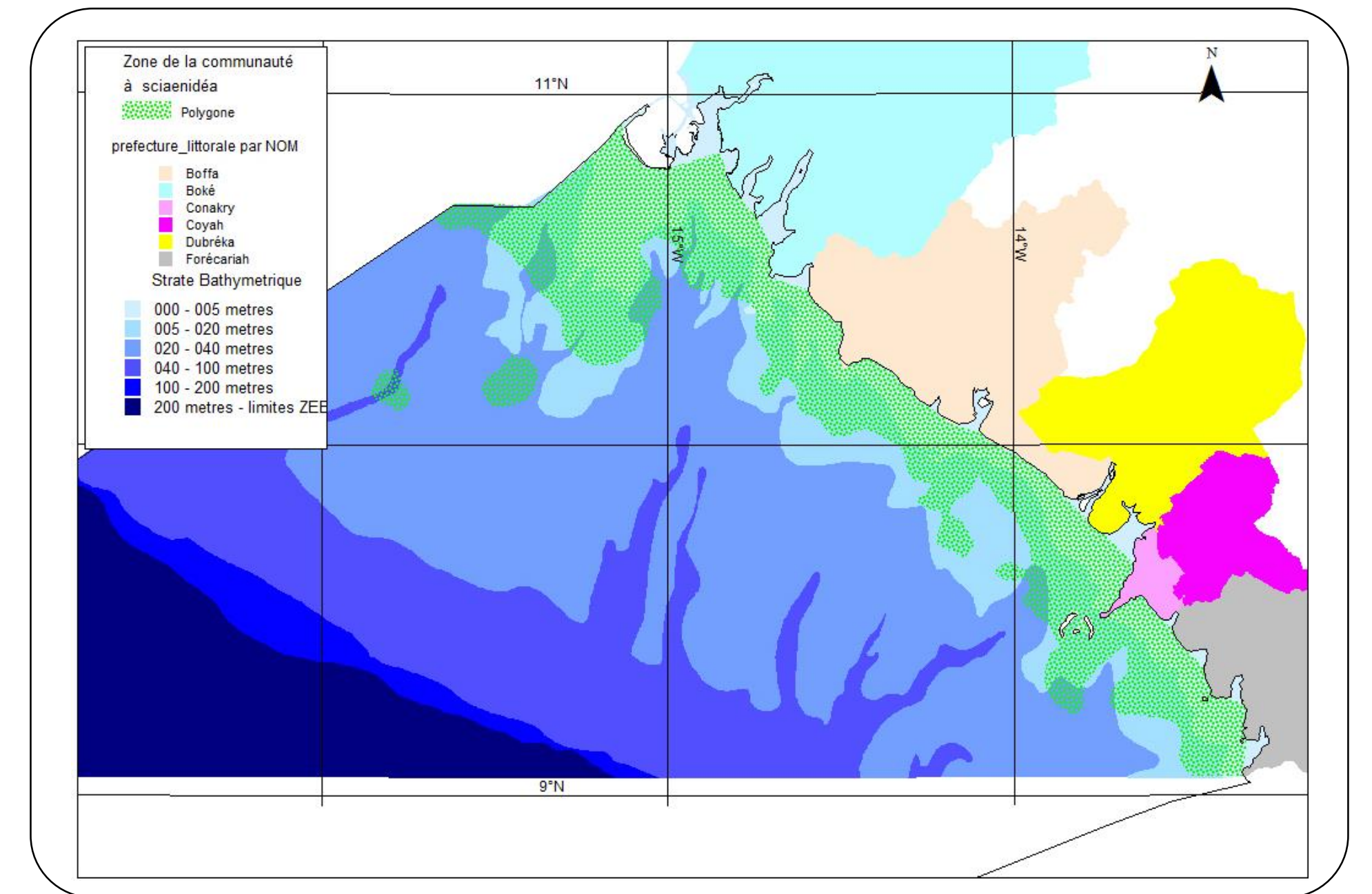
<sup>4</sup> UMR DECOD (Dynamique et Durabilité des Ecosystèmes), INRAE, Institut Agro Rennes-Angers, IFREMER, Rennes, France

## 1 Introduction

*Pseudotolithus elongatus*, commercially known as "bobo" in Guinea or "bossu" in West Africa, is characteristic of the estuarine Sciaenidae subcommunity. Its maximum size reaches 55 cm in Guinea compared to an average of 45 cm in other parts of the West African Atlantic. The analysis does not take into account Sierra Leone and Liberia.

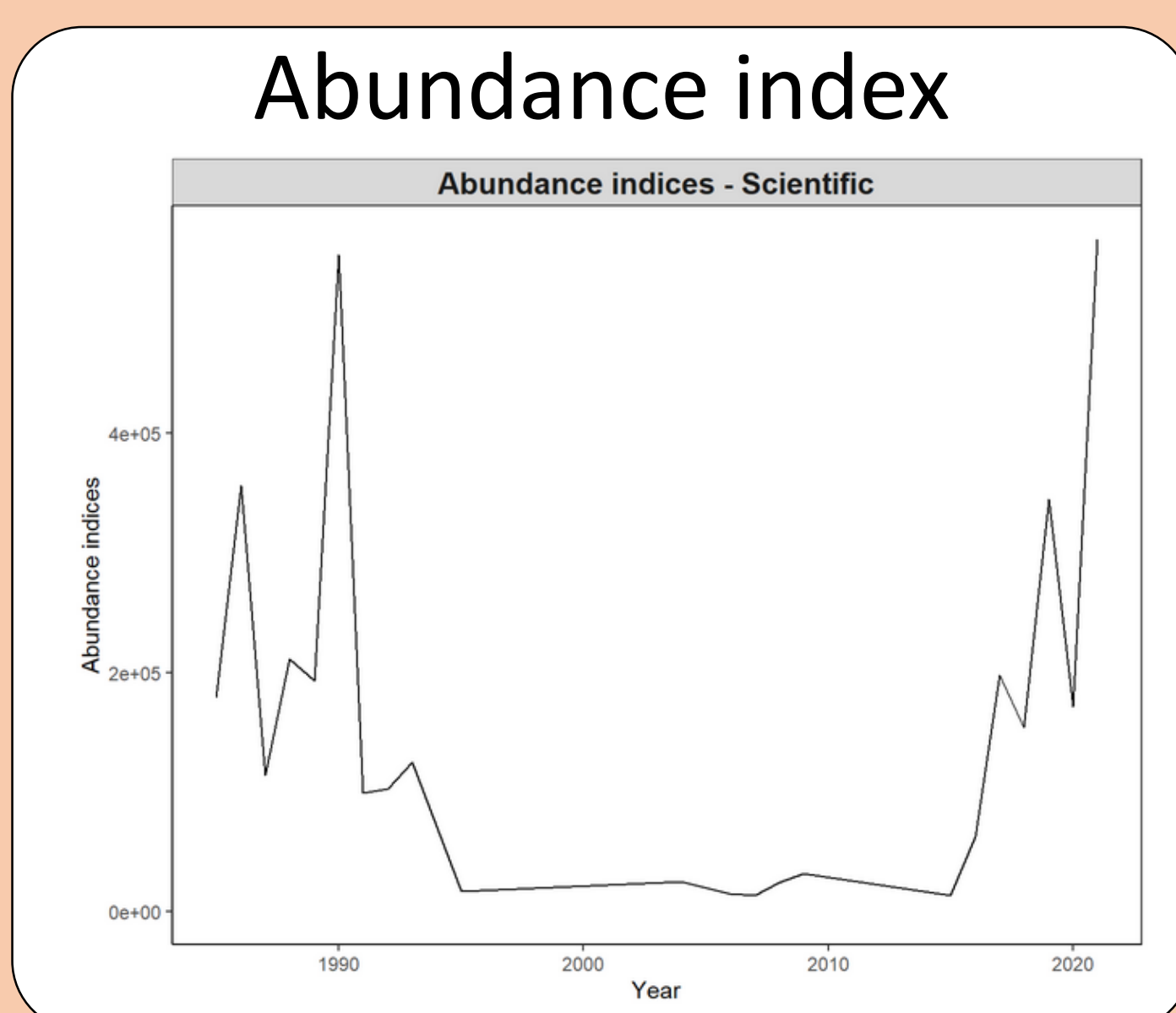


Distribution map (Domain et al, 1990)

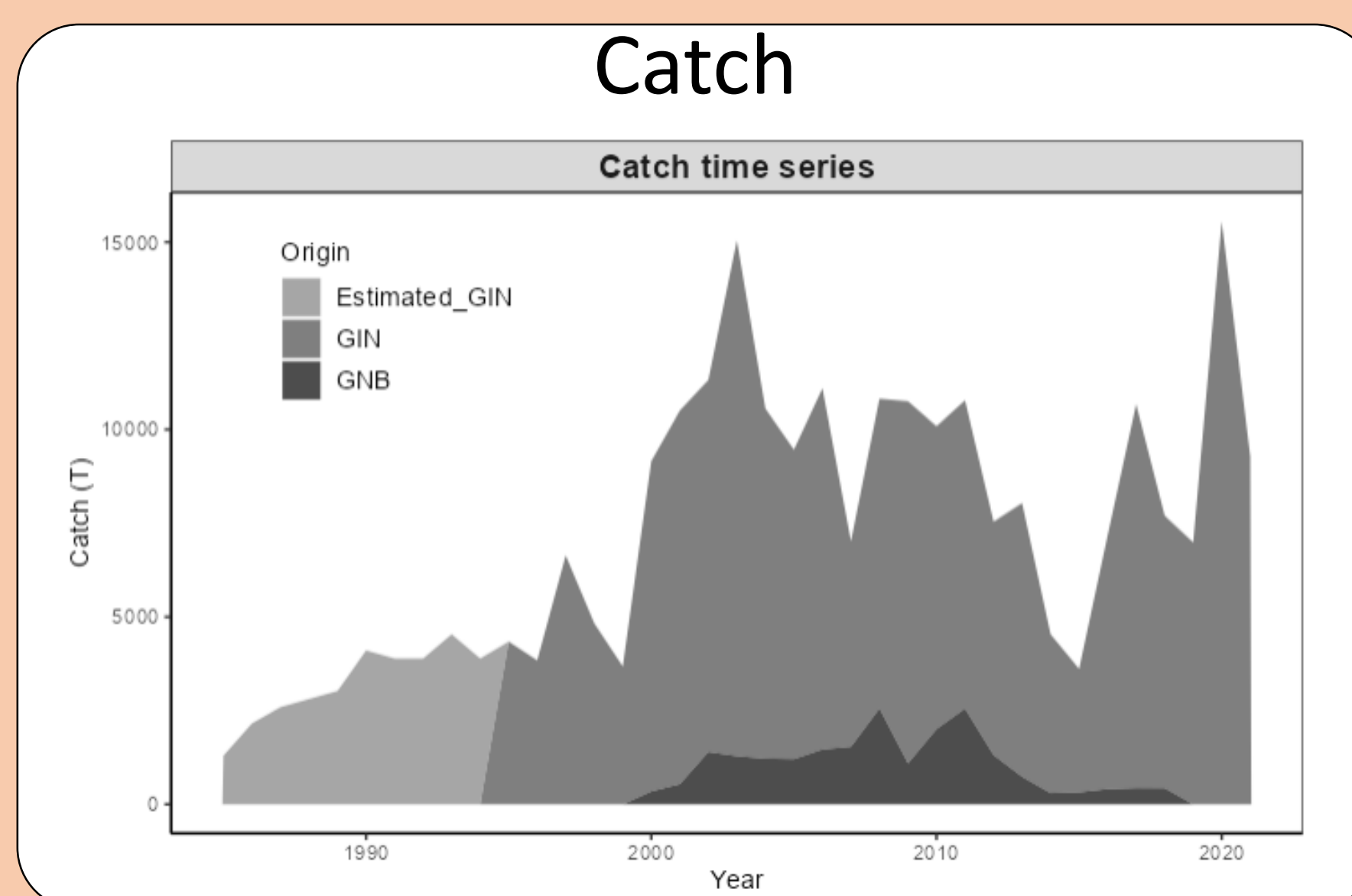


## 2 Data

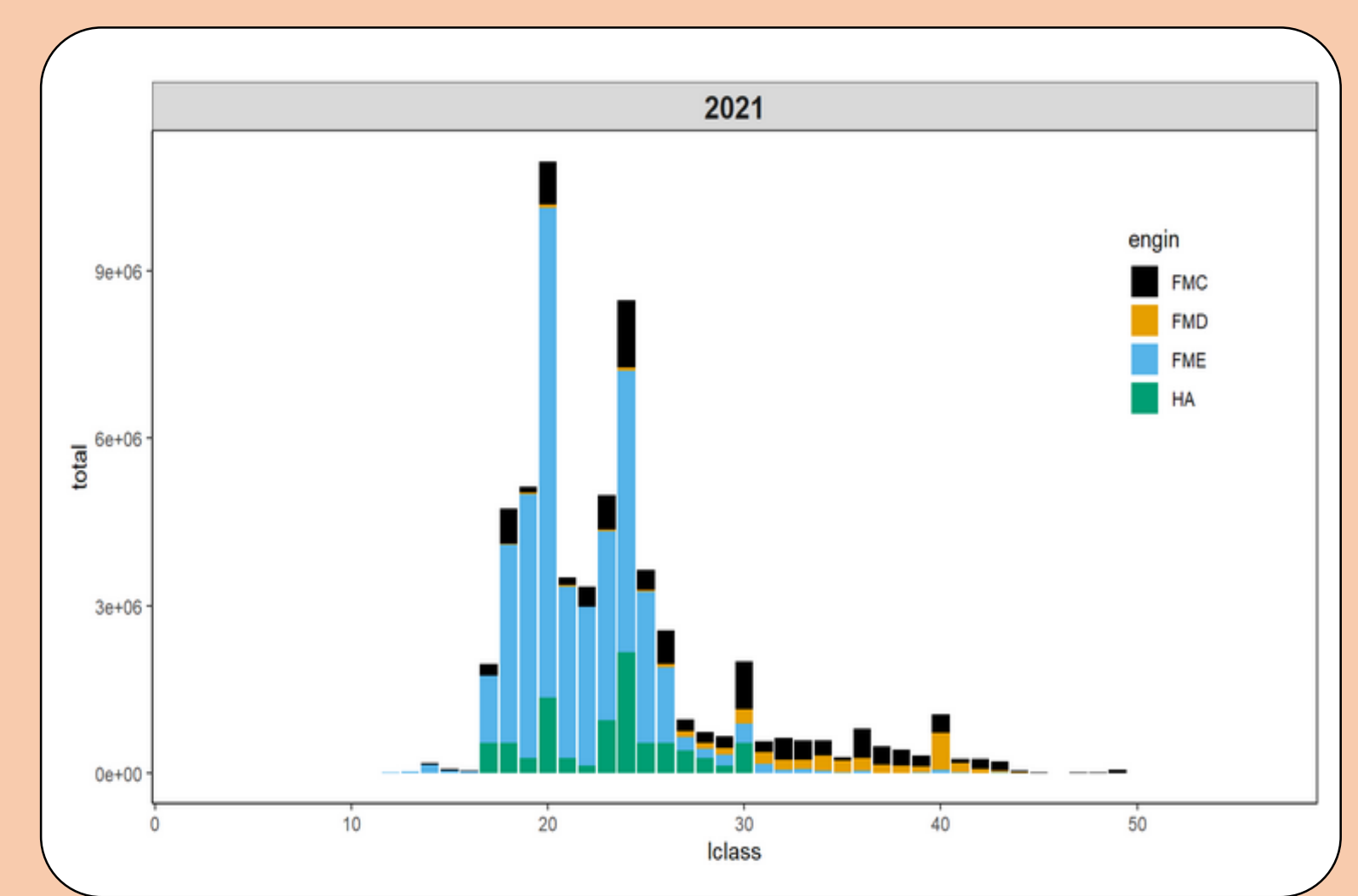
### Scientific survey



### Data on landings



### Length frequencies on landings

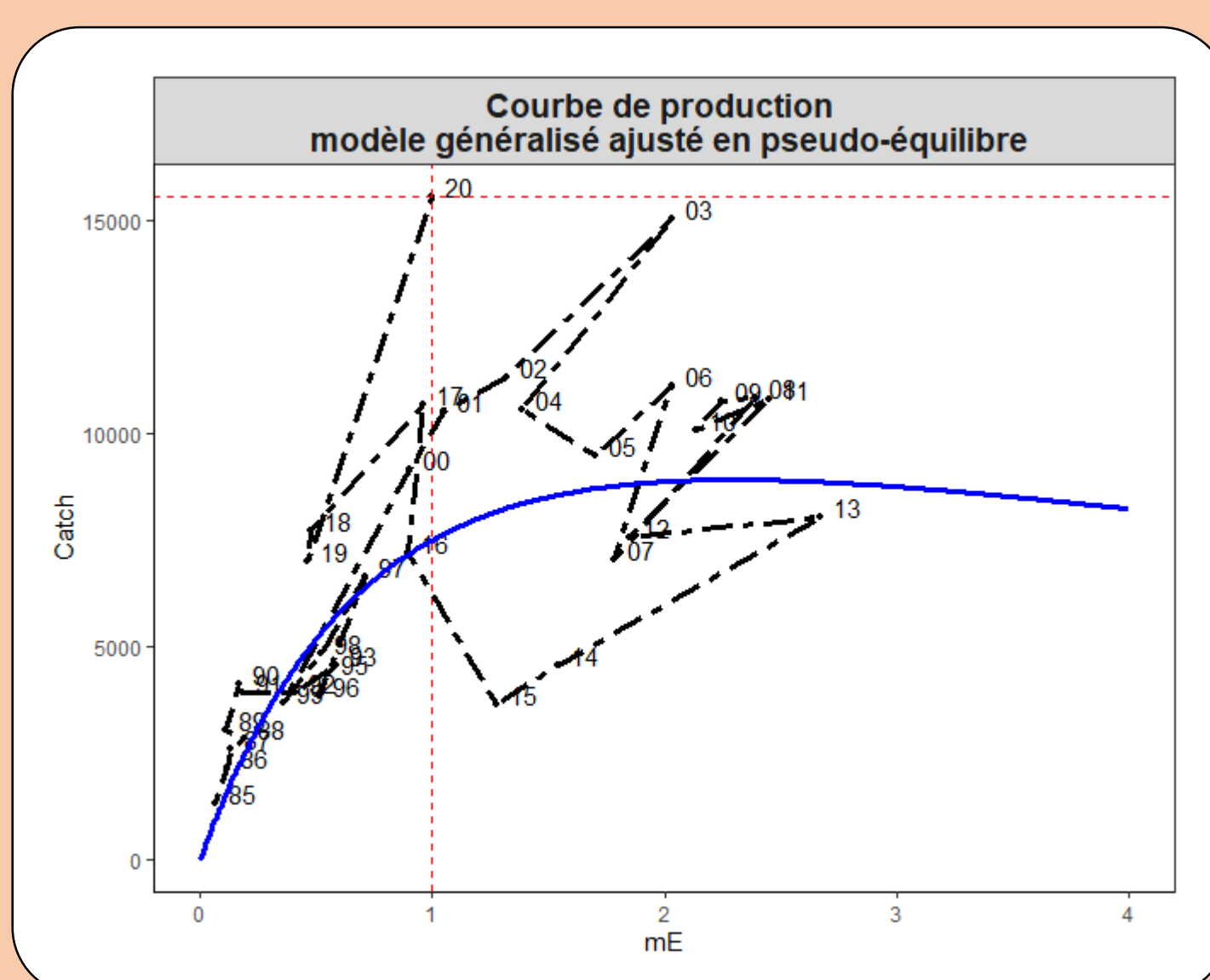


### Stock assessment

In this case study, due to their reliability and consistency, production models are preferred to models based on size frequencies.

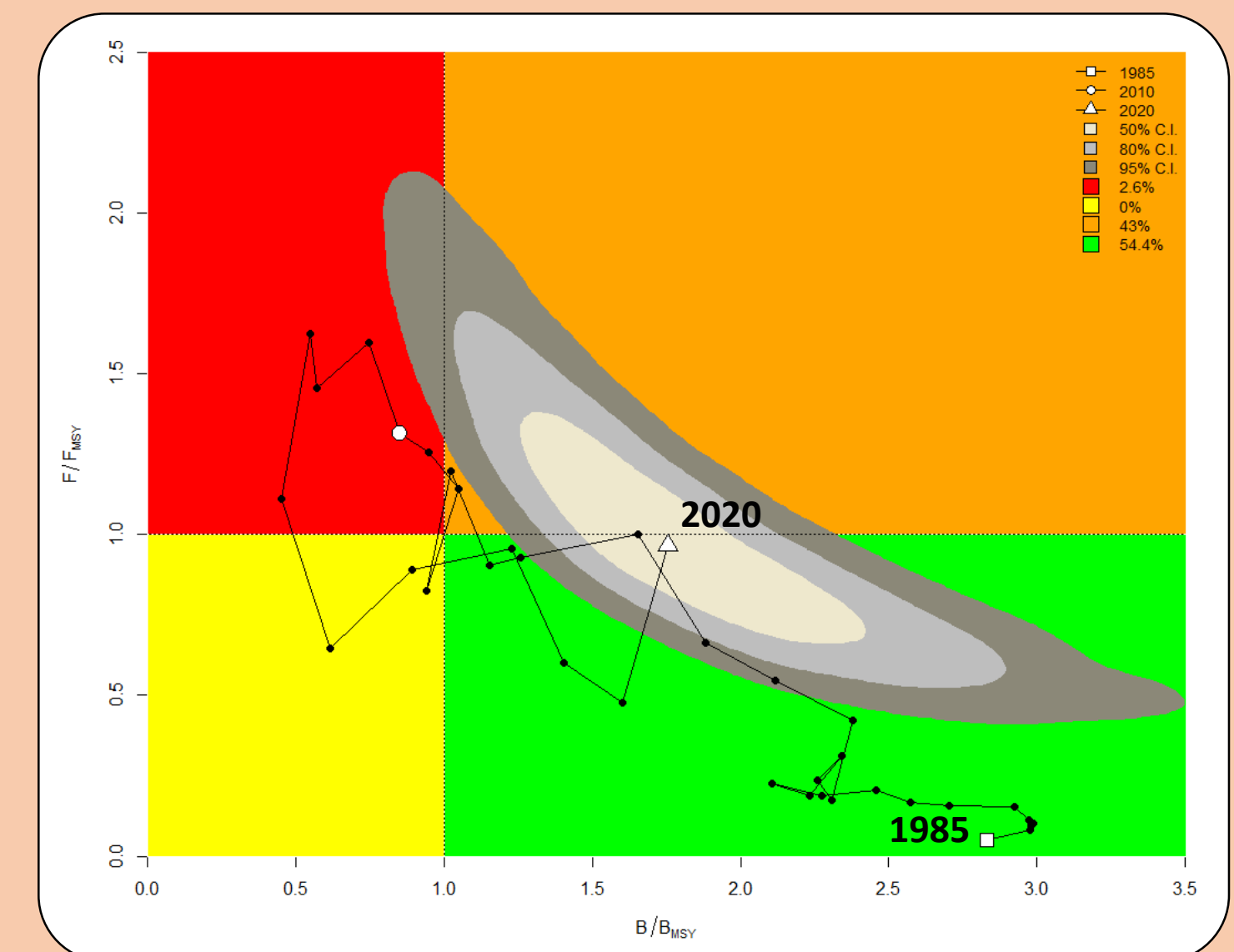
## 3 Results

### Several fitting methods



The adjustment of the global model in **pseudo-equilibrium** provides an MSY of **9000 T** and indicates a stock close to **full exploitation**

- Different hypotheses and statistical procedures but consistent diagnoses
- Multiple tools make diagnosis more reliable.



The production surplus model (**JABBA**) indicates a **fully exploited** stock with an MSY of **9100 T**.

## 4 Conclusion

- The consistency of the diagnoses depends on the use of the longest available time series of catches and fishing effort.
- The use of all the available data leads to a different diagnosis from that established by the CECAF working group

