

trials with square and diamond mesh codends to increase escapees and reduce discards in the Mediterranean bottom trawl fishery

AIM

To compare the overall selectivity (gear and fisher) on the total hake (*Merluccius merluccius*) population entering the bottom trawl codend.

TARGET SPECIES

Hake (*Merluccius merluccius*)

AREA, VESSEL

The trial took place in the Southern Aegean Sea (Eastern Mediterranean) on board Takis-Mimis NX 411 (29m, 357 KW) NX 411 (29m, 357kW) during 2015.

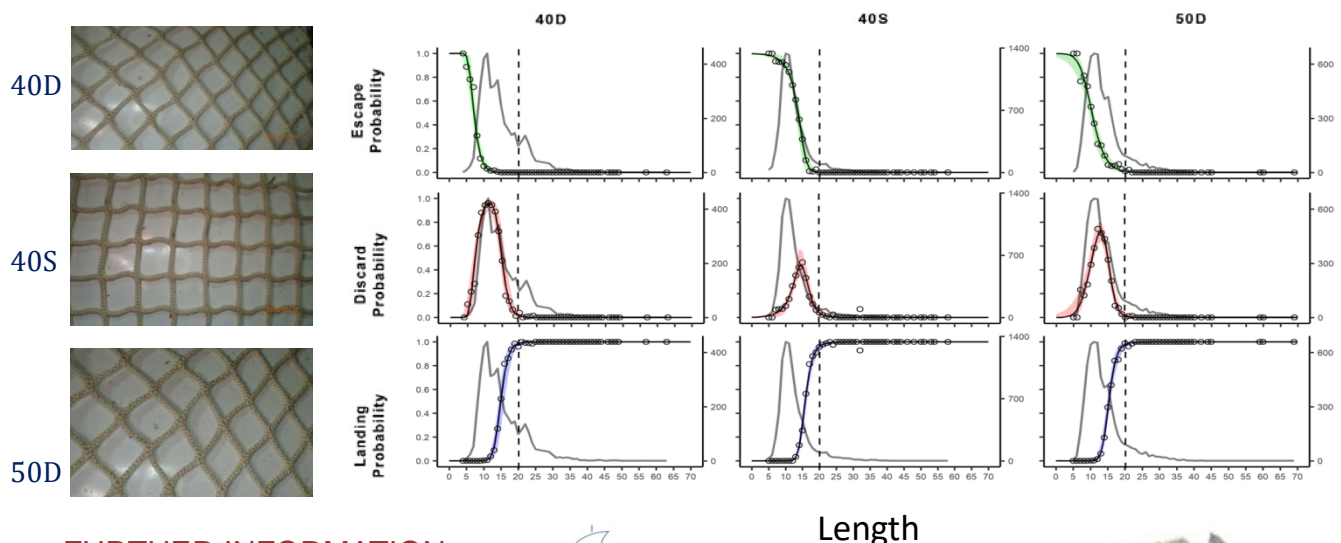


GEAR TRIALS

A comparison was made of the catching performance of trawl codends made of (i) 40 mm diamond mesh (40D) (ii) 40 mm square mesh (40S) and (iii) 50 mm diamond mesh (50D)

RESULTS

40S square mesh showed a larger amount of escapees and a lower amount of discards compared to the diamond 40D & 50D. Similar selection behaviour by the fisher was defined for landings



FURTHER INFORMATION

Chryssi Mytilineou, chryssi@hcmr.gr .



Length



DiscardLess

