

Use of an escape grid to optimise the size selectivity of *Pandalus borealis*

AIM

To reduce the capture of small Northern prawn (*Pandalus borealis*) in a shrimp trawl using an escape grid.

TARGET SPECIES

Northern prawn (*Pandalus borealis*)

AREA, VESSEL

The trial took place in the Skagerrak (ICES IIIa) on board S486 Sajoni (28 m, 746 kW)

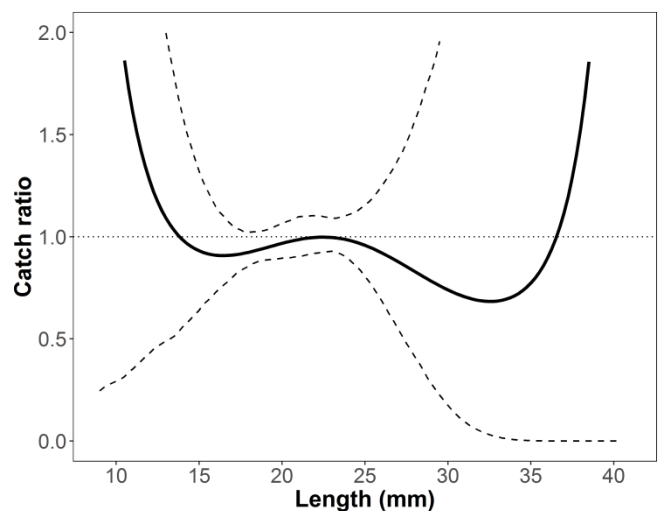
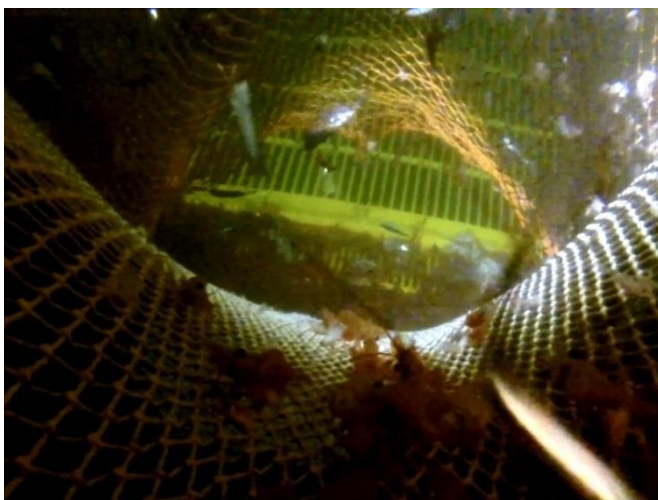


GEAR MODIFICATION

A gear with a grid consisting of two sections, a lower (10 mm bar spacing) and an upper section (19 mm bar spacing) was tested with a standard gear that had a grid with a 19 mm bar spacing

RESULTS

Shrimp catches in the two gears were very similar and there was no significant difference across all length classes. Underwater observations showed there were large issues with clogging of the escape grid.



FURTHER INFORMATION

Jordan Feekings (jpfe@aqua.dtu.dk)



DiscardLess

