

# a large 100 mm T90 mesh panel in the extension to improve trawl selectivity

## AIM

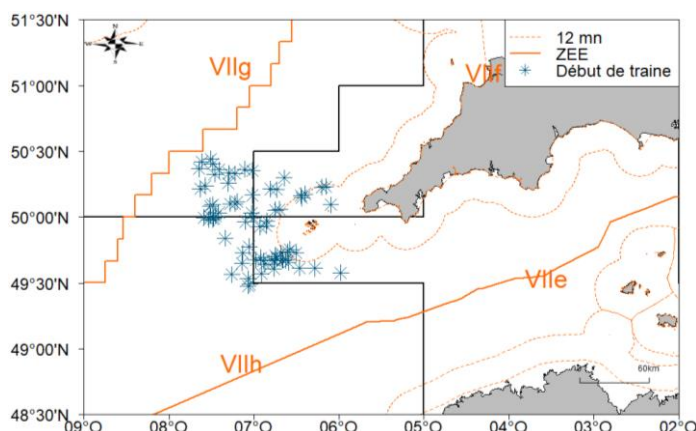
To compare the selectivity of a gear with a 120 mm square mesh panel (SMP) to a gear with a large T90 panel, in order to reduce catches of horse mackerel, boarfish and undersized haddock.

## TARGET SPECIES

John Dory, hake, haddock and monkfish

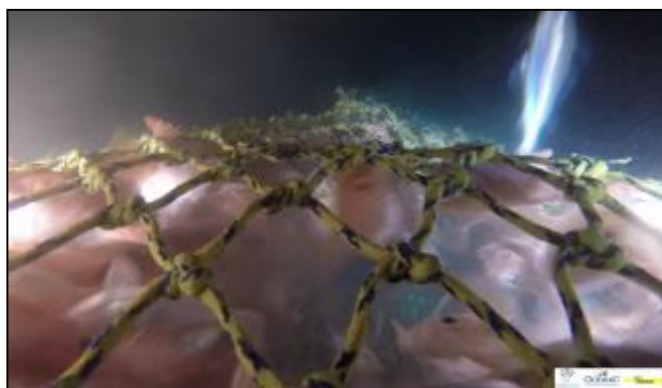
## AREA, VESSEL

36 pairs of alternate hauls were carried out from June to August 2017 on board 20-24 m bottom trawlers fishing in the Western Channel.

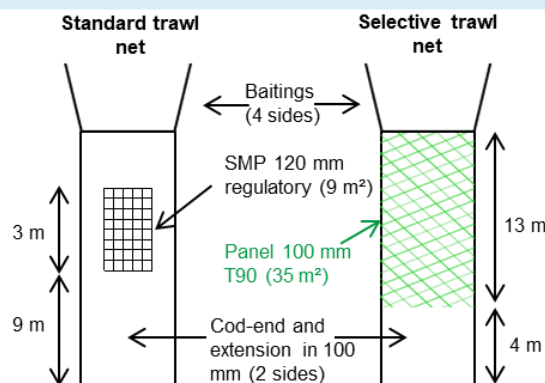


## GEAR MODIFICATION

The 120 mm SMP of a standard trawl with a 100 mm diamond mesh codend was replaced with a large 100 mm T90 panel. The surface areas of the two panels were approximately 9 and 35 m<sup>2</sup> respectively.



Haddock escaping from the panel of 100 mm T90 mesh on MOR BREIZ (among boarfish) - © Cobrenord



## RESULTS

The large T90 mesh panel improves catches of marketable hake and haddock while reducing catches of undersized fish of these two species.

In addition, moderately fewer boarfish were retained by the T90 panel.

An economic analysis showed that there could be a 74% increase in hake turnover at the scale of the PO fleet studied.

Species	Variation in weight caught by commercial grade between selective and standard gears						
	Undersized	50	40	30	20	10	0
Monkfish				=			
Horse mackerel				=			
Haddock	<30 cm	-	30-34 cm	35-40 cm	41-48 cm	> 48 cm	-
		-42%	-	=	+41%	+124%	=
Hake	<27 cm	27-36 cm	37-46 cm	47-58 cm	58-65 cm	66-73 cm	> 73 cm
		-69%	-51%	=	+25%	+50%	+56%
John Dory				-			
Boarfish				-17%			

## FURTHER INFORMATION

OP COBRENORD  
02 96 70 81 04, [contact@cobrenord.com](mailto:contact@cobrenord.com)  
<http://www.cobrenord.com/2018/07/17/parution-du-rapport-final-du-projet-rejemcelec/>

