

using a large square mesh panel (80 mm mesh size) in the last tapered section of a trawl to improve trawl selectivity

AIM

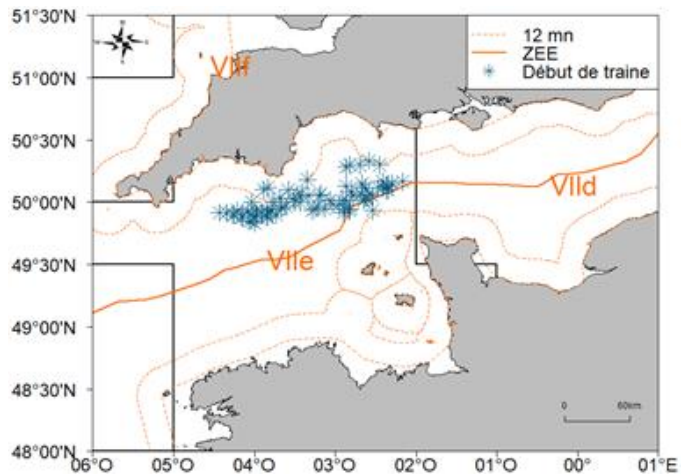
To use a large square mesh panel in the tapered section of a demersal trawl to reduce catches of mackerel, horse mackerel, haddock and undersized whiting.

TARGET SPECIES

whiting, red mullet, pouting, gurnards and squid

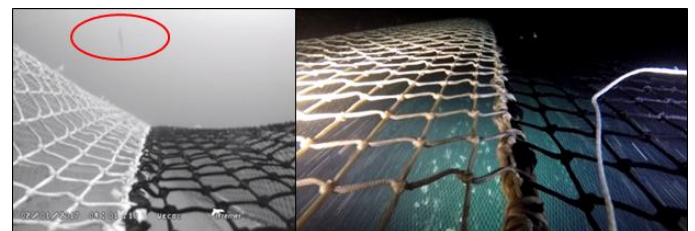
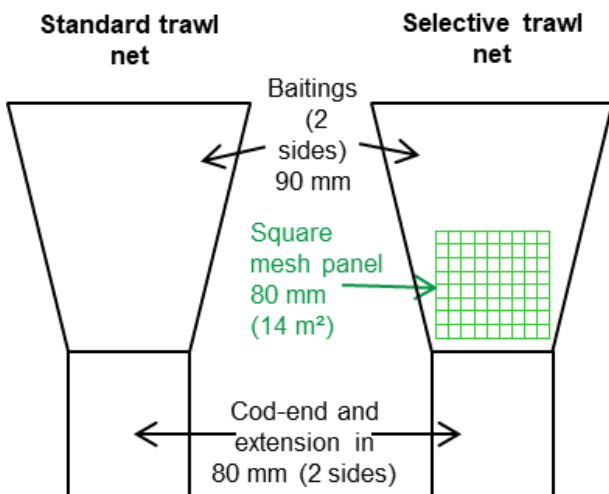
AREA, VESSEL

43 pairs of alternate hauls were carried out from June to July 2017 on board 20-24 m bottom trawlers fishing in the Western Channel.



GEAR MODIFICATION

A two panel trawl with an 80 mm codend was fitted with a large 80 mm square mesh panel in its last tapered section.



Whiting escaping from the SMP on the left (without artificial light) and SMP illuminated with a spotlight (on the right) (CARPE DIEM III vessel) - © Ifremer

RESULTS

The results show a decrease of catches of undersized whiting, but no difference between the two trawls for whiting greater than 30 cm.

There is a decrease of the catches of undersized mackerel and horse mackerel, but there are also losses of size 30 mackerel (landed by the studied fleet).

Species	Variation in weight caught by commercial grade between the selective and standard gears					
	Undersized	50	40	30	20	10
Horse mackerel	<15 cm	15-21 cm	22-29 cm	30-36 cm	37-41 cm	> 41 cm
	-76%			=		
Haddock			?			
Squids			=			
Gurnards			=			
Mackerel	<20 cm	-	-	20-30 cm	31-38 cm	> 38 cm
	-90%	-	-	-65%	?	?
Whiting	<27 cm	-	27-32 cm	33-36 cm	37-40 cm	> 40 cm
	-35%	-			=	
Red mullet			=			
pouting			=			

FURTHER INFORMATION

OP COBRENORD
02 96 70 81 04, contact@cobrenord.com
<http://www.cobrenord.com/2018/07/17/parution-du-rapport-final-du-projet-rejemcelec/>

