

115mm and 155mm square mesh panels in the body of a trawl

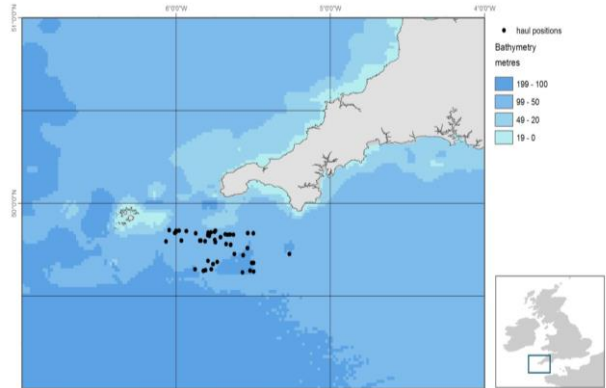
to improve size selection and reduce undersized haddock in ICES Area VII

TARGET SPECIES

Cod, haddock and other demersal species

AREA, VESSEL

11 hauls with a twin-rig; onboard MFV Our Olivia Belle in the Celtic Sea during August 2014

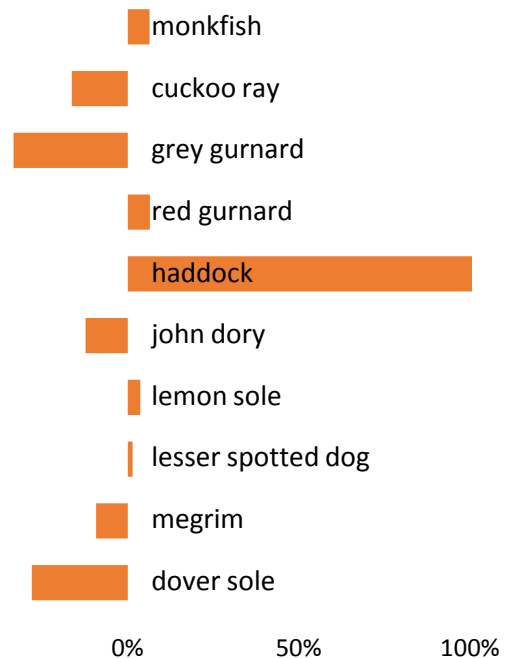


GEAR MODIFICATION

The standard gear was a 115mm mesh size trawl with a 87mm codend and a 115mm SMP @ 6-9m from codline.

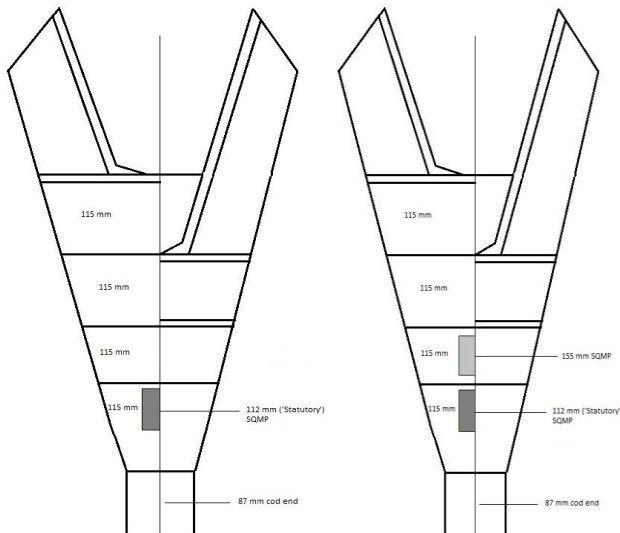
In addition the modified gear also had a 155mm SMP @ 9.5-12.5m from codline

Percentage difference in weight of landed catches



Standard trawl

Experimental Trawl



RESULTS

The addition of the 155mm SMP did not reduce the overall haddock catches and substantial numbers of small haddock were still caught.

FURTHER INFORMATION

Cefas.co.uk / Contact: Stephen.mangi@cefas.co.uk;
Thomas.catchpole@cefas.co.uk



Centre for Environment
Fisheries & Aquaculture
Science



DiscardLess

www.discardless.eu/selectivity_manual

